

# TU MATTERS TO MARYLAND

## CAPITAL BUDGET TESTIMONY

TO THE MARYLAND GENERAL ASSEMBLY

Presented by **Kim Schatzel**  
*President, Towson University*  
March 2021



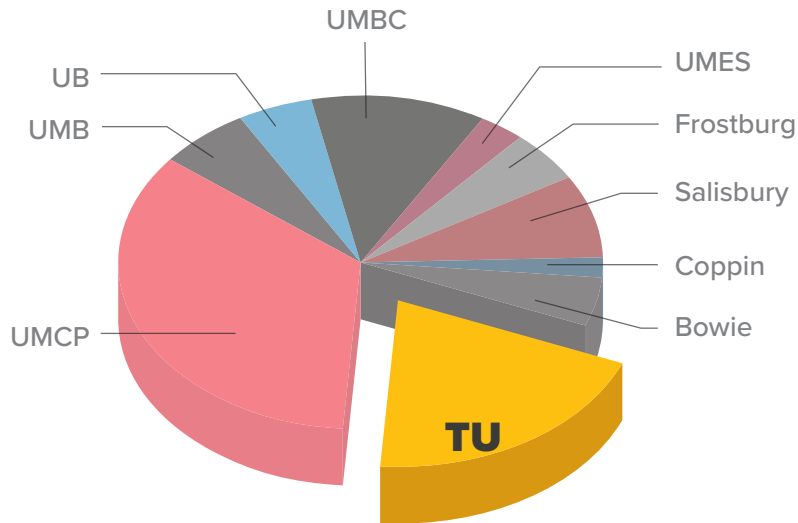
# TOWSON UNIVERSITY IS...



## THE SECOND-LARGEST AND FASTEST-GROWING

### SHARE OF USM STUDENTS

UMCP	36%
<b>TU</b>	<b>20%</b>
UMBC	12%
Salisbury	7%
UMB	6%
Bowie	6%
Frostburg	4%
UB	4%
UMES	2%
Coppin	2%



### TU IS RESPONSIBLE FOR

**59% OF USM GROWTH**

### OVER THE LAST 10 YEARS

*IPEDS and USM Opening Fall Enrollments Report (Fall 2019).. Excludes UMGC.*

*Head count enrollment data: USM Opening Fall Enrollments Report (Fall 2020). Excludes UMGC.*

# TOWSON UNIVERSITY IS...

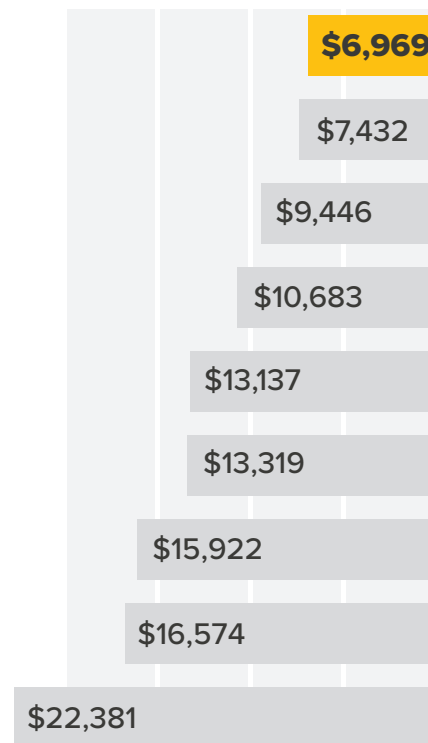


## A GREAT RETURN ON MARYLAND'S INVESTMENT

TU achieves the **SECOND-HIGHEST GRADUATION RATE** in the USM while producing graduates for **\$31,635 BELOW THE AVERAGE COST** of USM campuses, generating **\$181 MILLION IN ANNUAL SAVINGS.**

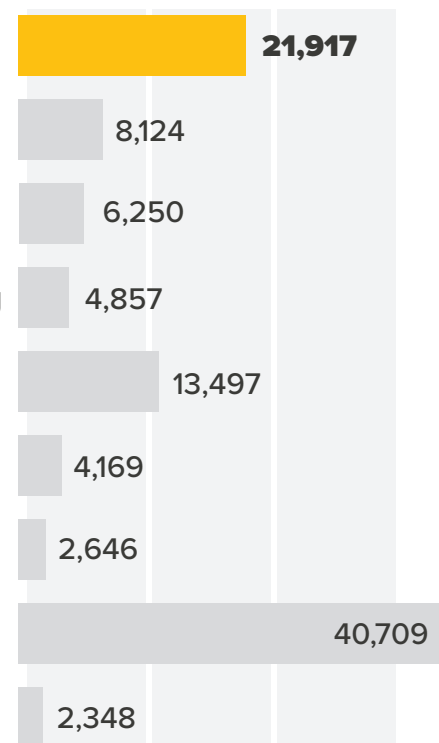
*Based on 5,732 degrees and certificates conferred in 2017-18*

### FY21 ESTIMATED STATE FUNDS PER FTE



*Governor's FY21 Budget Book.  
Excludes UMGC and UMB.*

### USM INSTITUTION HEAD COUNT



*Enrollment Data: USM / Opening Enrollments Report (Fall 2020).*

# TOWSON UNIVERSITY IS...



## DELIVERING INCLUSIVE EXCELLENCE

TU enrolls and graduates the **SECOND-LARGEST POPULATION OF MINORITY STUDENTS OF ANY UNIVERSITY IN THE STATE**

TU has accounted for **68%** **OF THE GROWTH OF MINORITY STUDENTS IN THE USM IN THE LAST FIVE YEARS**

*\*excluding primary-online*



## MARYLAND'S ONLY INSTITUTION WITH NO ACHIEVEMENT GAP

### SIX-YEAR GRADUATION RATE

	Overall	African American	Latinx	All Minorities	Pell Recipients
<b>TOWSON UNIVERSITY</b>	<b>71%</b>	<b>73%</b>	<b>69%</b>	<b>70%</b>	<b>68%</b>
<b>MARYLAND PUBLIC INSTITUTIONS*</b>	<b>68%</b>	<b>52%</b>	<b>68%</b>	<b>61%</b>	<b>54%</b>
<b>NATIONAL AVERAGE</b>	<b>63%</b>	<b>45%</b>	<b>57%</b>	<b>57%</b>	<b>51%</b>

*\*Primary State Control Only  
Including Morgan State University and Saint Mary's College of Maryland*

*IPEDS - 2013 cohort data*

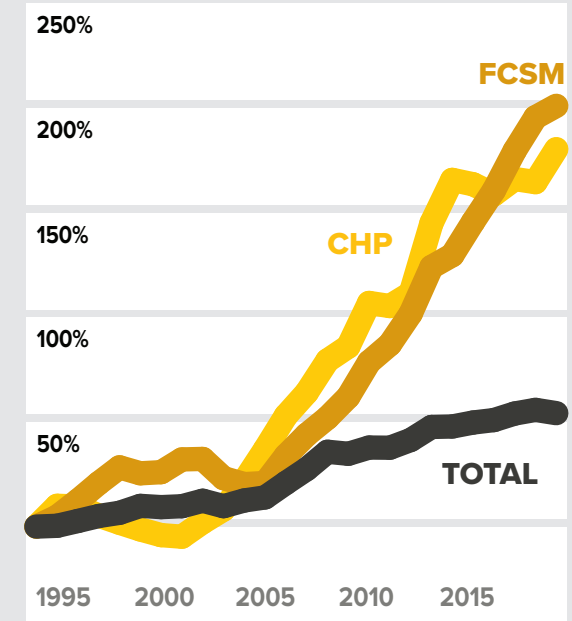






## UNDERGRADUATE ENROLLMENT GROWTH

(1994–PRESENT)



The new Science Complex is now open and

**10,000 STUDENTS WILL TAKE CLASSES THERE EACH YEAR,**

many to fulfill Core Curriculum requirements.

## NEW SCIENCE COMPLEX

We appreciate the state’s support for our new Science Complex, which now houses world-class research and teaching.

# COLLEGE OF HEALTH PROFESSIONS BUILDING

Towson University is addressing severe shortages in Maryland's health professions workforce by producing the most health professions bachelor's degrees in the state.<sup>1</sup> We appreciate the state's support for the new College of Health Professions building, which is vital to close Maryland's 23,000-person employment gap.<sup>2</sup>

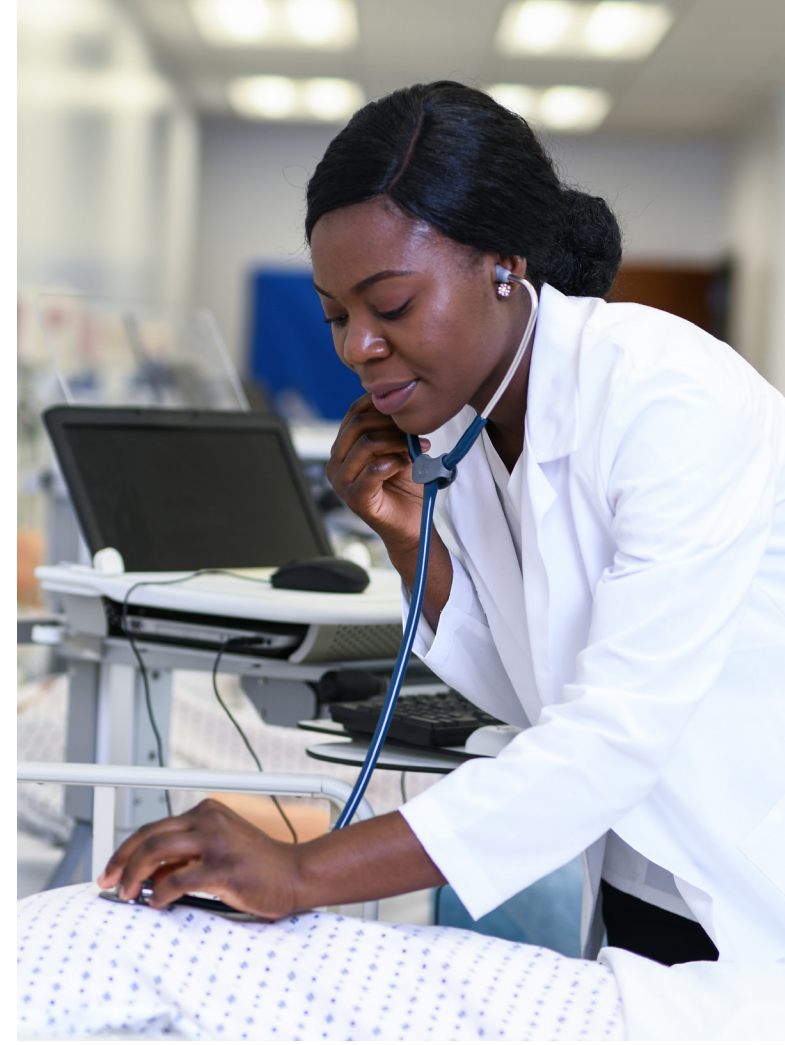
*1 U.S. Department of Education, IPEDS for CIP 51 (health professions and related programs) 2016–17*

*2 Maryland Workforce Exchange, January 2019*

## THIS PROJECT WILL:

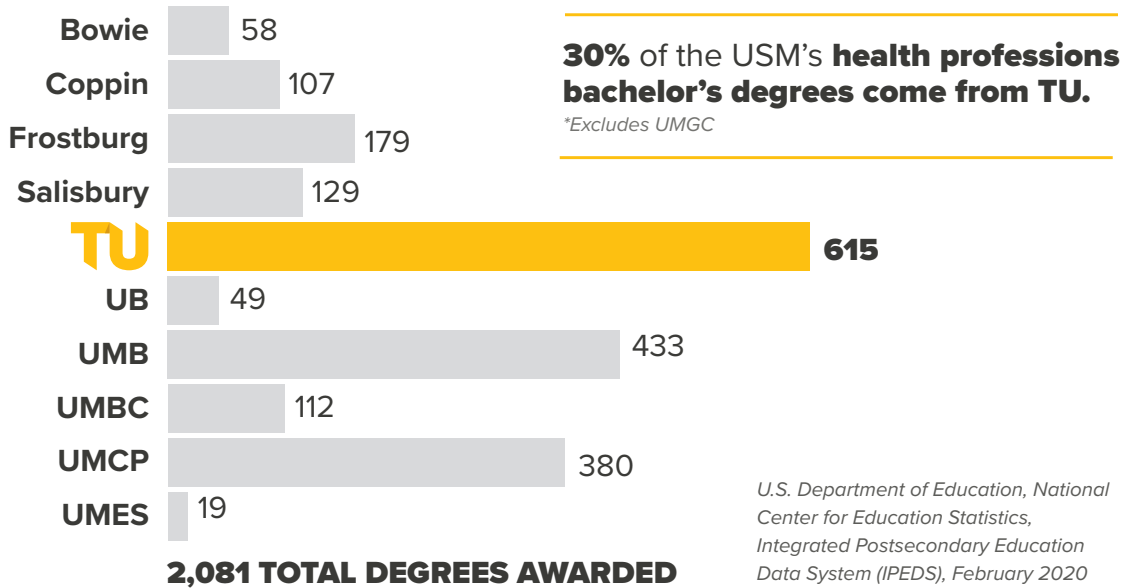
- Support the college's **184%** increase in undergraduate enrollment since 1998
- Alleviate space restrictions that limit the college to enrolling just **18%** of applicants in high-demand programs
- Help fill the **23,000-person** gap in Maryland's health professions workforce<sup>3</sup>

*3 Maryland Workforce Exchange, January 2019*



# COLLEGE OF HEALTH PROFESSIONS BUILDING

## TU CONFERS THE MOST HEALTH PROFESSIONS BACHELOR'S DEGREES IN THE USM



## COLLEGE OF HEALTH PROFESSIONS BUILDING

<b>FY2020</b>	\$5,266,000 Planning
<b>FY2021</b>	\$6,437,000 Planning
<b>FY2022</b>	\$50,684,000 Planning & Construction
<b>FY2023</b>	\$75,802,000 Construction & Equipment
<b>FY2024</b>	\$36,470,000 Construction & Equipment
<b>TOTAL COST</b>	<b>\$174,694,000</b>

**GSF** 228,993

**COMPLETED** **Spring 2024**

*Governor's FY 21 Budget Book*

23,000 unfilled health professions positions in Maryland cause

**\$1.8 BILLION IN UNREALIZED WAGES AND \$197 MILLION**

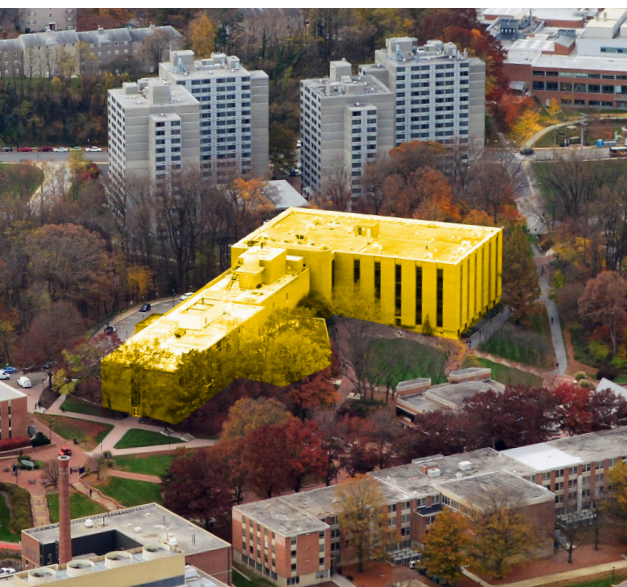
in unrealized state and local tax revenues.



**TOWSON UNIVERSITY  
CAPITAL IMPROVEMENT  
PROGRAM REQUEST**

# SMITH HALL RENOVATION

This project is essentially phase II of the new Science Complex. When science programs relocate in 2021, Smith Hall, our outdated science building with antiquated labs and incomplete sprinkler systems, will be largely mothballed. Approximately 61%, or 85,000 net assignable square feet (NASF), of Smith Hall will be unusable, exacerbating TU’s existing 300,000 NASF space deficit and affecting time to degree for all TU students.



**THIS PROJECT WILL:**

- Prevent a mothballed building from sitting in the heart of TU’s campus, having major safety and financial implications
- Provide 139,000 NASF of classroom, study and student support spaces without costly new construction
- Completely renovate a core campus asset to support student success and improve time to degree

**SMITH HALL RENOVATION**

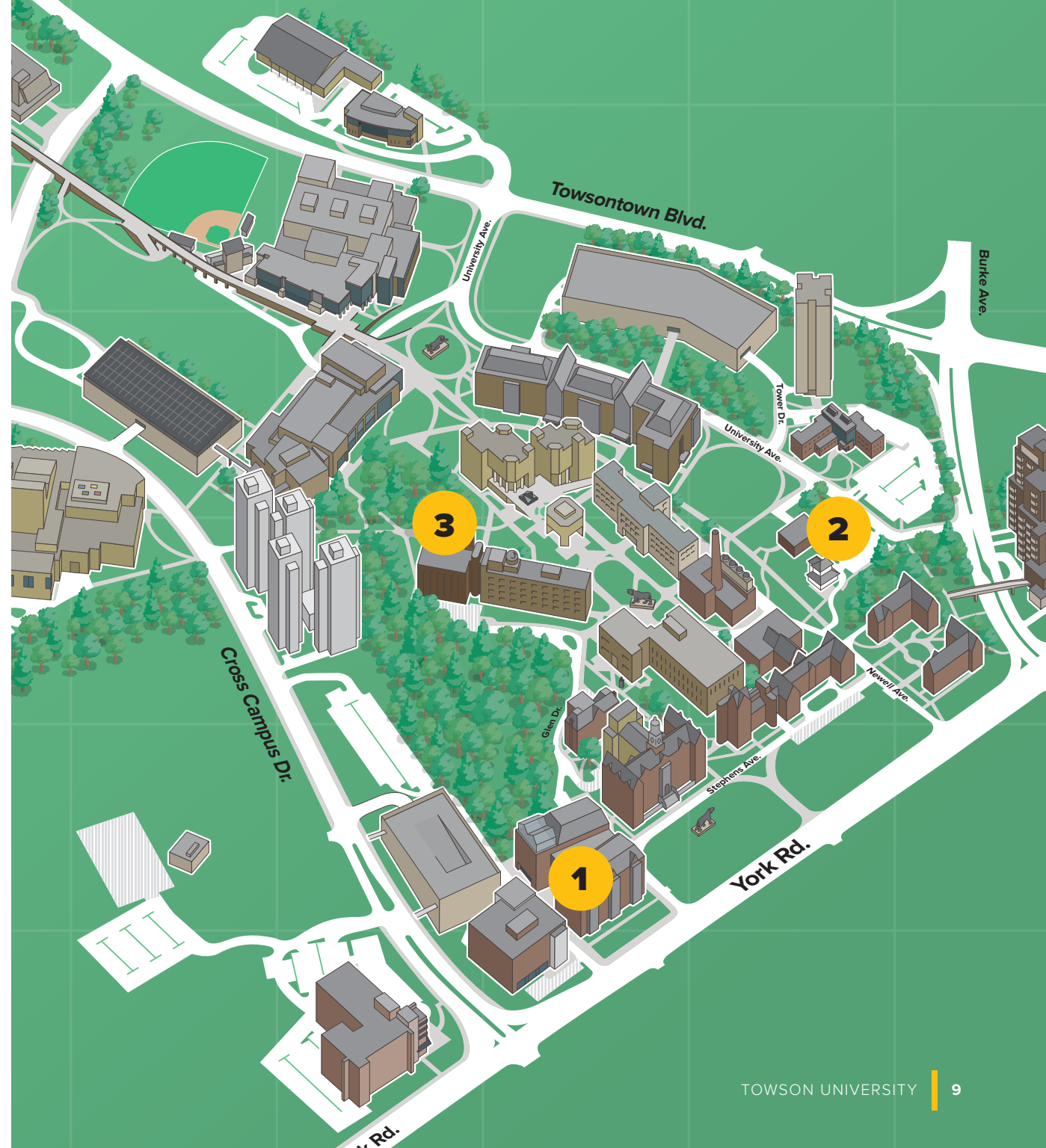
<b>FY2023</b>	\$3,894,000 Planning
<b>FY2024</b>	\$4,760,000 Planning
<b>*FY2025</b>	\$58,668,000 Construction
<b>FY2026</b>	\$60,433,000 Construction & Equipment
<b>TOTAL COST</b>	<b>\$127,755,000</b>
<b>GSF</b>	Communications: 120,000 General Classroom: 100,000 Total: 220,000
<b>COMPLETED</b>	<b>Fall 2026</b>

*\*Governor’s FY21 Budget Book through FY25*

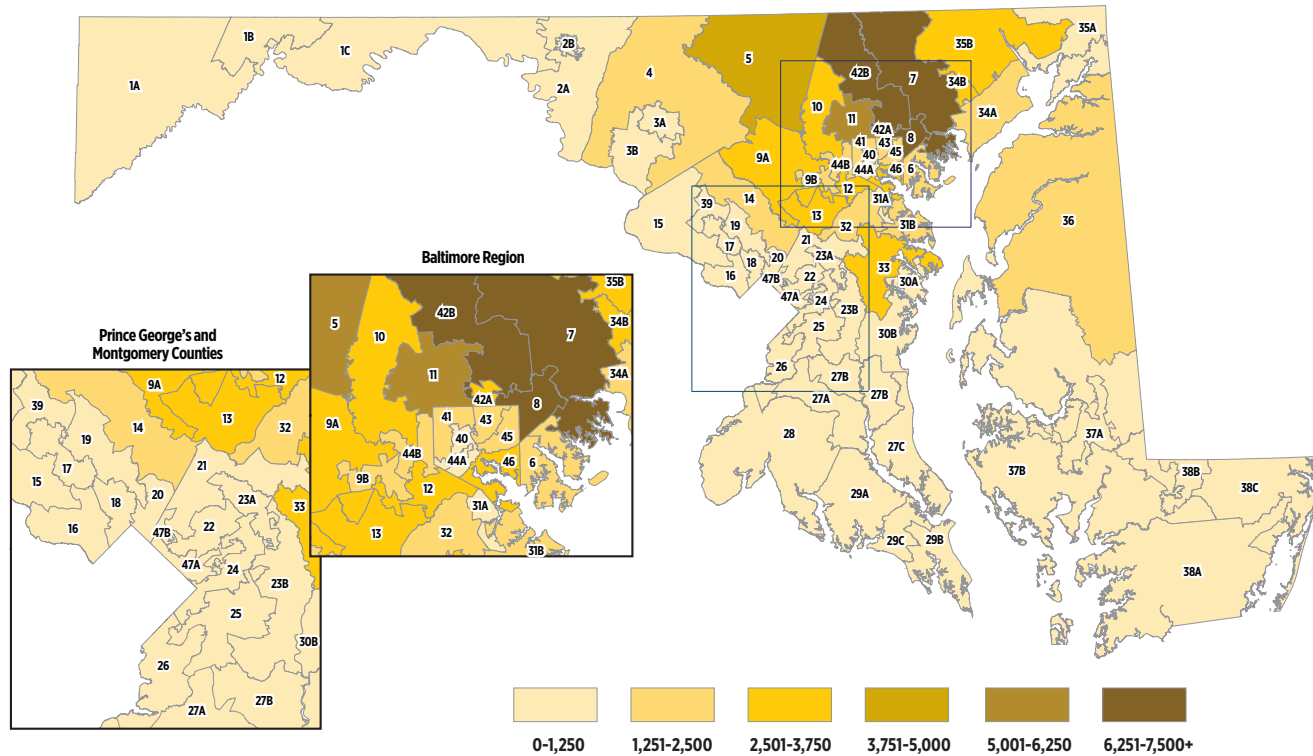
# 10-YEAR PROJECTS MAP

## CAPITAL IMPROVEMENT PROGRAM

- 1 New Science Complex
- 2 College of Health Professions Building
- 3 Smith Hall Renovation



# TOWSON UNIVERSITY ALUMNI BY MARYLAND LEGISLATIVE DISTRICT



1A	103	27C	599
1B	102	28	1238
1C	162	29A	553
2A	803	29B	312
2B	213	29C	530
3A	1132	30A	1247
3B	754	30B	692
4	2748	31A	355
5	5112	31B	2210
6	2224	32	1898
7	8421	33	3574
8	6591	34A	2224
9A	3605	34B	2870
9B	1435	35A	573
10	3459	35B	4295
11	5938	36	1451
12	2973	37A	73
13	3046	37B	702
14	1961	38A	153
15	1223	38B	185
16	611	38C	558
17	984	39	1170
18	658	40	990
19	1107	41	1682
20	706	42A	2997
21	1137	42B	7142
22	483	43	2154
23A	384	44A	218
23B	891	44B	1874
24	612	45	1442
25	556	46	2579
26	499	47A	162
27A	362	47B	63
27B	628		

**FOR ADDITIONAL INFORMATION**

**Kathleen Maloney**

*Executive Director of Government and Community Relations*

Office: 410.704.4034 | Cell: 410.409.0978 | [kmaloney@towson.edu](mailto:kmaloney@towson.edu)